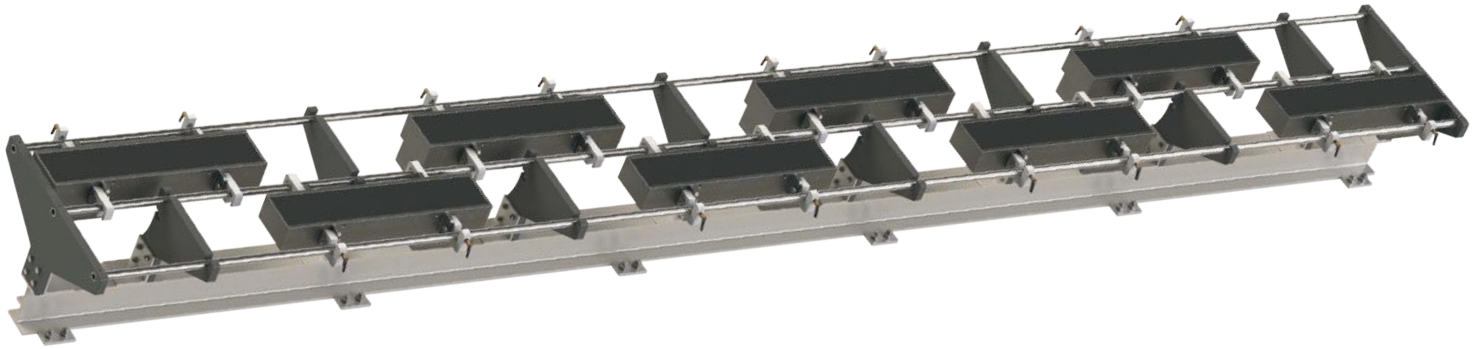


STEALTH[®] Modular Surface Metal Detector



OVERVIEW:

Stealth Modular Surface metal detectors are custom manufactured to inspect products that are typically sheeted or "web". It is ruggedly built to withstand the harshest environments. The Stealth uses digital signal processing technology and has high sensitivity levels to ensure the detection of the smallest ferrous, non-ferrous and stainless steel contaminants; thus, ensuring product integrity and provide machine protection against metal fragments.

HALO[®]

Our revolutionary Halo system is an automatic metal detector testing device. It is designed to automatically test ferrous, non-ferrous and stainless-steel samples on all Fortress metal detectors. Automatic testing saves time, money, labor, along with removing the risk of human error and work place injury at critical control points on a manufacturing line while complying with industry standards. The Halo testing system is a perfect companion to the Modular Surface metal detector.

THE FORTRESS ADVANTAGE:

- **"Never Obsolete"** Commitment: detectors are always supported with parts and services
- Standard electronics configuration across product line allowing easy support and trouble shooting
- Modular design; have fewer components
- Custom built detectors or stock sizes
- **Simple Operation, Outstanding Reliability, Exceptional Performance**

KEY FEATURES:

- Unique Rail Mounted Modular Design
- Detailed USB Data Collection
- Digital Signal Processing Technology
- Ultra Sensitive Detection
- Easy "Fast" Calibration
- Flash Memory Stability
- Multi-Zone Detection
- Multi-Level Password Protection

APPLICATIONS:

- Non-Wovens
- Board
- Carpet
- Plastics
- Textiles
- Rubber
- Paper
- Sheeted Wood

Don't See Your Application? Please Contact Us!

AVAILABLE ADD-ONS:

- Contact Communication Software
- **HALO**
Automatic Testing System



Fortress Technology Inc.
51 Grand Marshall Dr,
Toronto, ON, M1B 5N6
Canada
Tel: 1-888-220-8737
sales@fortresstechnology.com

Fortress Technology (Europe) Ltd.
The Phantom Building
7 Beaumont Road, Banbury,
OX16 1RH UK
Tel: +44 (0) 1295 256 266
sales-UK@fortresstechnology.com

Fortress Technology Sistemas de Inspeção Ltda.
ROD. Presidente Tancredo de Almeida Neves
3007 - Km 30,5 - Vila Rosina
Caieiras - São Paulo, CEP: 07748-400
Fone: 55-11-3641-6153
vendas@fortress-iis.com.br

FORTRESS[®]
TECHNOLOGY

www.FortressTechnology.com

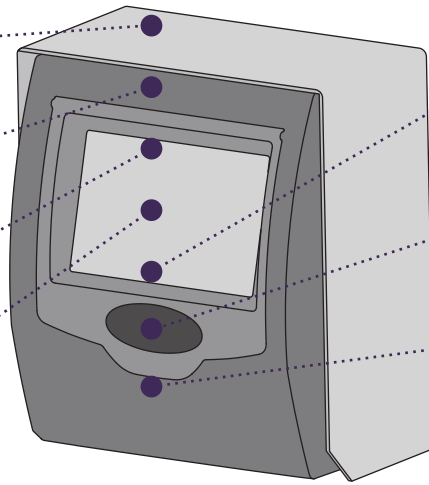
STEALTH[®] Modular Surface Metal Detector

Product Library Stores
Multiple Product Settings
for Easy Recall

Multi-Level Password
Protection

User-Friendly
Multi-Language
Control Panel Interface

Auto-balance and
Ultra-sensitivity levels



Automatic QA Testing
and Calibration

USB Port for access to
QA Reports,
Configuration and
Firmware Updates

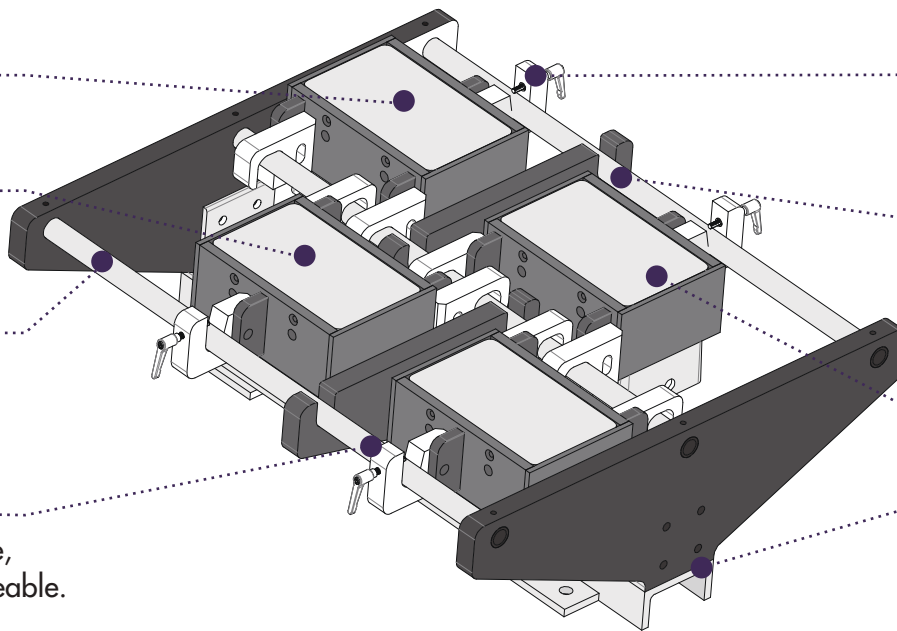
Powerful Digital Signal
Processing (DSP)
Technology

Customized Modular
Surface Detector Sizes

Each module has
reject output with
adjustable sensitivity

Sleek Modular Rail
Mounted Design for
greater flexibility and
reliability

Module positions are
independent, adjustable,
removeable and replaceable.



Toolless Quick Connect
Module Connection
Adapters

Unique Rail Design
enables module
removal/replacement
while web is present

Suitable for High
Speed processes

Compatible with High
Temperature and High
Humidity environments

DETECTOR OPTIONS & SPECIFICATIONS:

Construction	Aluminum, Steel-It epoxy painted
Detector Surface	Long-lasting Epoxy for high humidity durability
MultiScan Detection	Multiple Scanning Modules for optimal detection in very wide applications
Reject Systems	Multiple programmable reject and fault outputs
Rating	Aluminum: Nema 12 / IP65K
Remote Mounting	Display panel terminal can be mounted remotely and/or independently
Network Communications	Ethernet via Contact Communications Software, Ethernet/IP, OPC UA
Electrical	100-240v Single phase, 1amp/module, 50-60Hz

Simple Operation. Outstanding Reliability. Exceptional Performance.

FORTRESS[®]
TECHNOLOGY

Copyright © 2018 Fortress Technology Inc. All rights reserved. Patent Pending. The information, designs and artwork contained in this document are confidential and may not be disseminated, distributed or copied without written consent from Fortress Technology Inc. Specifications, designs, features and technology subject to change without notice.